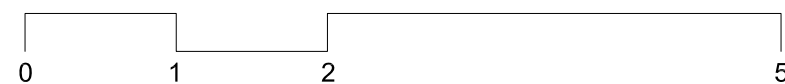
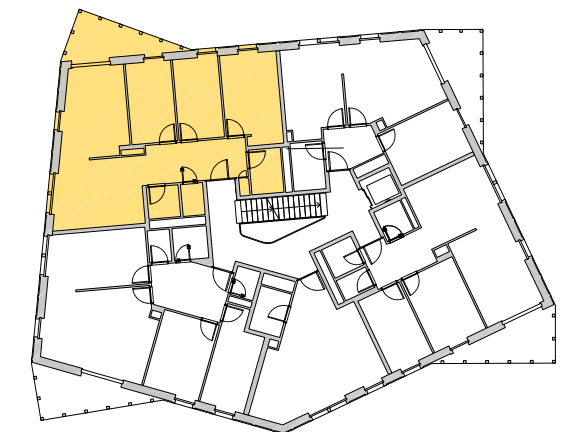
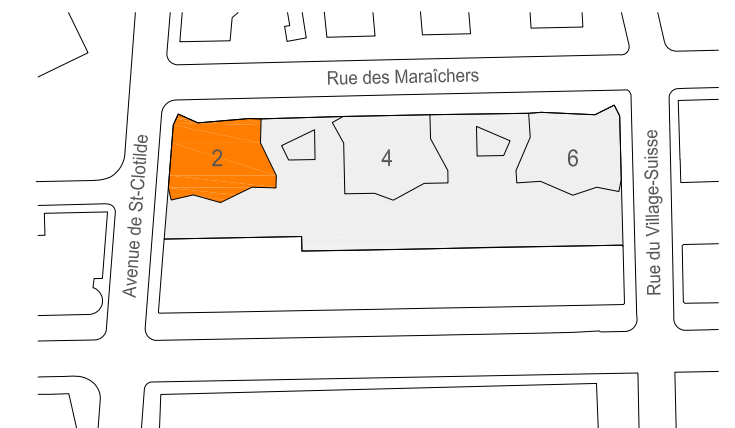
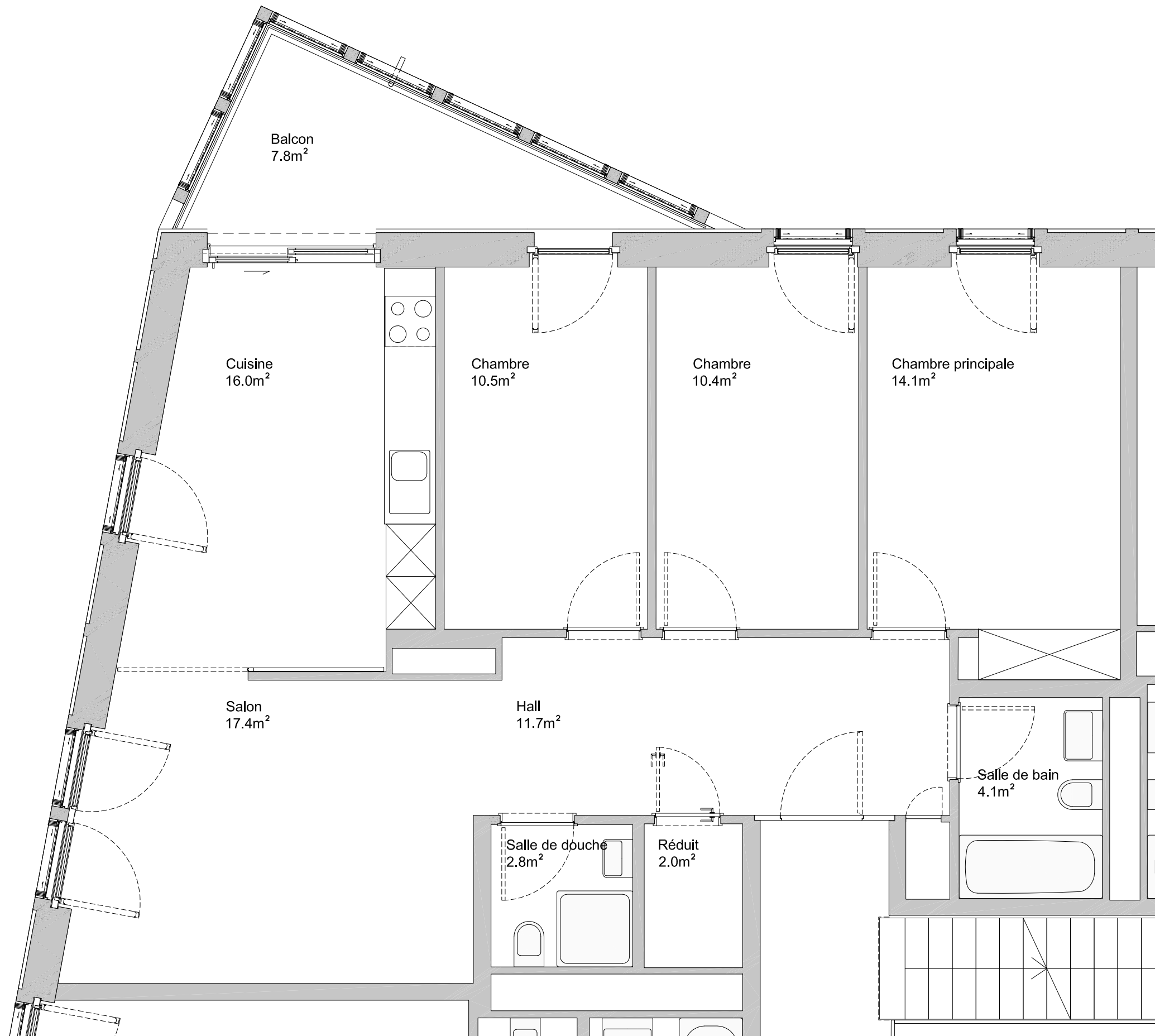


# Rue des Maraîchers 2 1205 Genève

Appartements : 15, 25, 35, 45, 55, 65  
 Pièces : 5 pièces  
 Surface utile : 89,0 m<sup>2</sup>  
 Etages : 1er, 2e, 3e, 4e, 5e, 6e



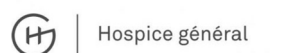
Echelle graphique, ne constitue pas un document contractuel

**Consortium architectes DL-LP**  
 dl-c, designlab-construction sa EPFL / FAS / SIA  
 lopes & périnet-marquet architectes EPFL Sàrl

Format : A3  
 Date : 25.10.2022  
 Indice : -



**HOSPICE GÉNÉRAL**  
<https://www.hospicegeneral.ch/fr>  
 Cours de Rive 12, 1204 Genève



**RÉGIE BRUN**  
<http://www.regiebrun.ch/>  
 Rue Sillem 6, 1207 Genève

